

U.S. History

Administered May 2017

RELEASED

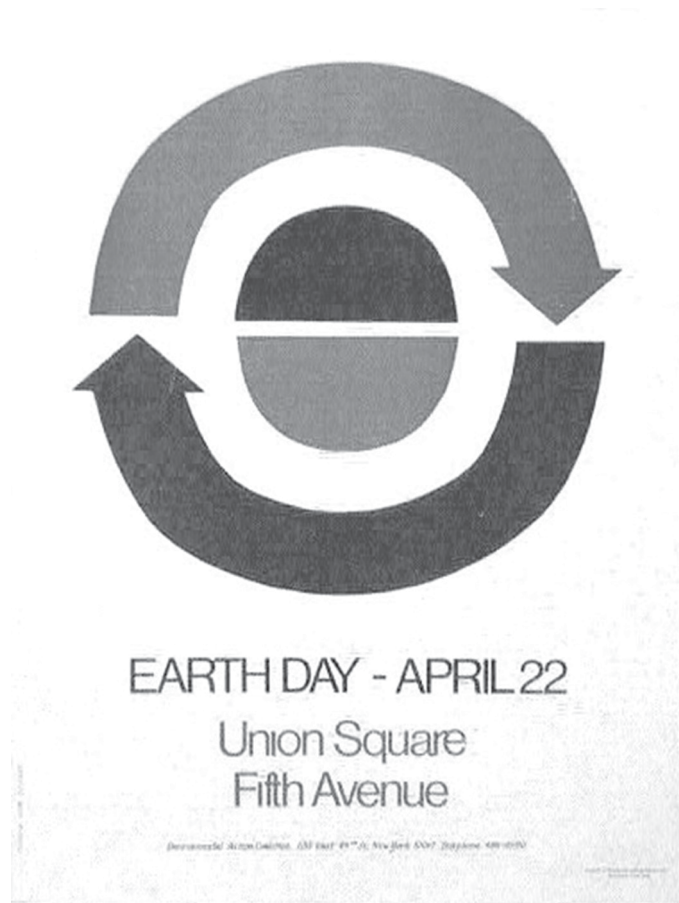
U.S. HISTORY

DIRECTIONS

Read each question carefully. Determine the best answer to the question from the four answer choices provided. Then fill in the answer on your answer document.

- 1** The Progressive goal to implement women’s suffrage was accomplished by —
- A** a national referendum
 - B** an executive order
 - C** a Supreme Court decision
 - D** a constitutional amendment

2 This poster is from the first annual Earth Day in 1970.



Source: Library of Congress, Prints and Photographs Division

Earth Day was created for the purpose of —

- F** celebrating the diversity of humankind
- G** honoring the world's agricultural workers
- H** raising awareness of environmental issues
- J** promoting peace throughout the world

- 3** The Korean War was an effort by the United States to —
- A** carry out its policy of containing the spread of communism
 - B** keep its economy strong by maintaining wartime activities
 - C** secure additional Asian trading partners
 - D** extend the principles of the Marshall Plan to Asia
-

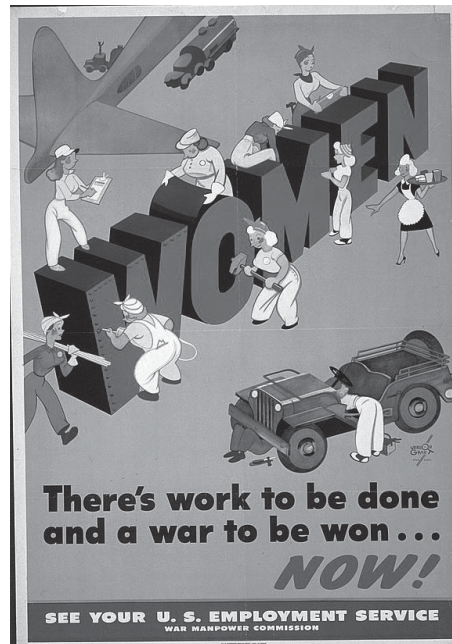
4

A heat shield material designed to act as an insulating barrier is now used to protect high-rise buildings from fires.

Source: NASA

This technology was originally developed primarily to —

- F** give rockets greater boost during takeoff
 - G** protect the space shuttle on reentry
 - H** provide astronauts with improved navigational equipment
 - J** slow down space capsules as they landed in the ocean
-
- 5** One reason the 2008 presidential election was historically significant is that it was the first time —
- A** traditionally Republican states voted Democratic
 - B** voters used computerized ballots
 - C** an African American won the presidency
 - D** a Southerner won the vice-presidency



Source: Library of Congress

What was one direct effect of World War II activities like those promoted by this poster?

- F** Changes in the traditional roles of women
- G** The establishment of women's suffrage
- H** Combat training for women
- J** The election of women political leaders

An estimated thousand people lived in St. Louis's Hooverville, located on the banks of the Mississippi near the city dump. In New York, noted one observer in 1931, hobos were "coming into the city in larger numbers than ever before and have set up a 'jungle' for themselves in the heart of the East Side" on vacant lots owned by the city.

—Kenneth Kusmer, 2002

Which of the following contributed most to the situation described in this excerpt?

- A** The rise of corporate monopolies
 - B** Strict banking regulations and high income tax rates
 - C** The influx of immigrants into urban areas
 - D** High unemployment and widespread home foreclosures
-

8 Which of the following is an example of fulfilling a civic responsibility?

- F** Interviewing for employment
- G** Reporting for jury duty
- H** Collecting donations for charities
- J** Preserving records of ethnic ancestry

?

- College “teach-ins”
- Burning draft cards
- Mass demonstrations

Which of the following is the best title for this list?

- A** Protests Against the Vietnam War
- B** Opposition to the Arms Race
- C** Support for Gender Equality
- D** Demands to Stop Dumping Chemical Waste

-
- 10** The main reason the United States launched military operations in Afghanistan in October 2001 was to —
- F** prevent genocide
 - G** seize weapons of mass destruction
 - H** destroy an international terrorist organization
 - J** overthrow an absolute monarchy

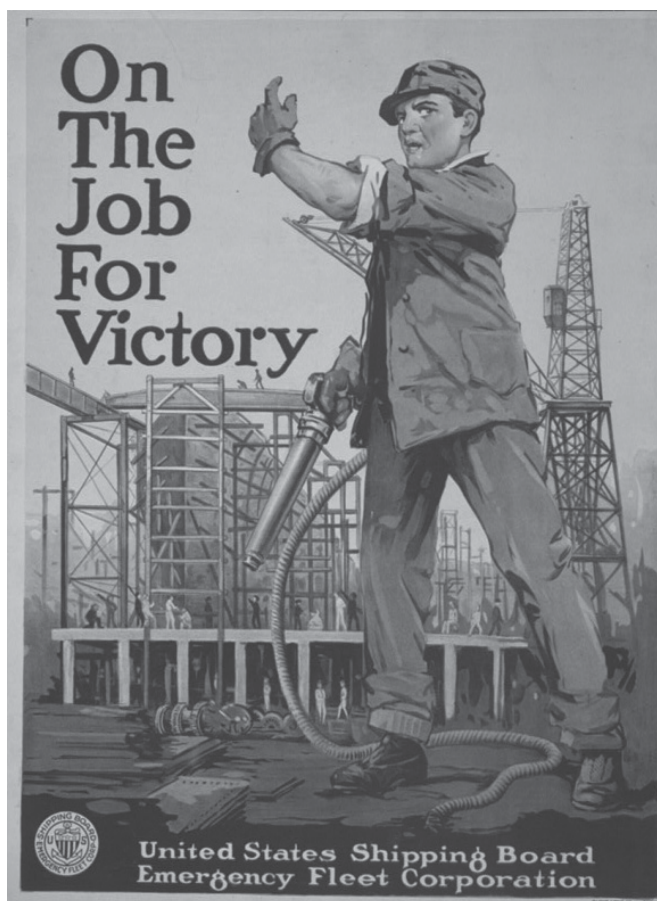
The House of Representatives shall be composed of Members chosen every second Year by the People of the several States.

—*U.S. Constitution, Article I, Section 2*

Which statement from the Declaration of Independence influenced Article I, Section 2 of the Constitution?

- A** "He has affected to render the Military independent of and superior to the Civil power."
- B** "To secure these rights, Governments are instituted among Men, deriving their just powers from the consent of the governed."
- C** "He has obstructed the Administration of Justice, by refusing his Assent to Laws for establishing Judiciary powers."
- D** "These United Colonies are, and of Right ought to be Free and . . . they are Absolved from all Allegiance to the British Crown."

12 This 1917 poster depicts a worker in a shipyard.



Source: Library of Congress, Prints and Photographs Division

This poster could be used to support which assertion?

- F** Demand for labor in war industries helped increase employment.
- G** Use of new war technologies required extensive training.
- H** Conscription caused a shortage of laborers during wartime.
- J** Standardization of parts helped streamline the production of munitions.

13 Which of the following was a direct result of the civil rights movement?

- A** An increase in respect for suburban housewives
 - B** Increased political participation by minority groups
 - C** The revitalization of inner cities
 - D** Increased migration to rural areas
-

14

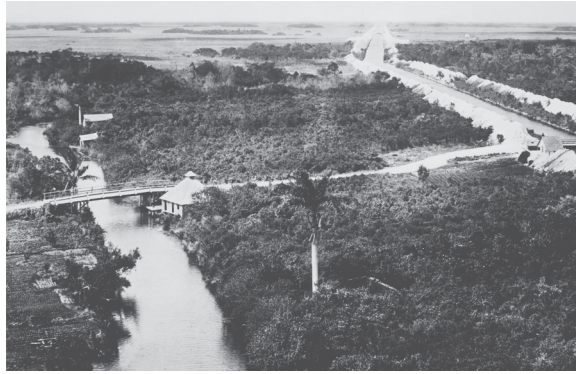
The United States is the world's best hope, but . . . if you tangle her in the intrigues of Europe, you will destroy her power for good, and endanger her very existence. . . .

—*Senator Henry Cabot Lodge*

Senator Lodge made this statement in opposition to —

- F** U.S. membership in the League of Nations
- G** the funding of a massive buildup of the U.S. Navy
- H** a relaxation of U.S. citizenship requirements
- J** U.S. entry into the Spanish-American War

Miami, 1913



Miami, 1997



1997 photo courtesy South Florida
Water Management District

The changes shown in these photographs most likely —

- A** helped improve workplace safety
- B** increased the supply of natural resources
- C** altered the makeup of natural ecosystems
- D** helped decrease energy consumption

- 16** The launch of *Sputnik I* intensified Cold War tensions and caused the —
- F** United States to increase spending on technology and weapons to compete with the Soviet Union
 - G** Soviet Union to move missiles and warships to Cuba in order to threaten the United States
 - H** United States to send troops and aid to East Berlin to free it from Soviet control
 - J** Soviet Union to threaten Europe with nuclear attack if Soviet airspace were violated
-

17

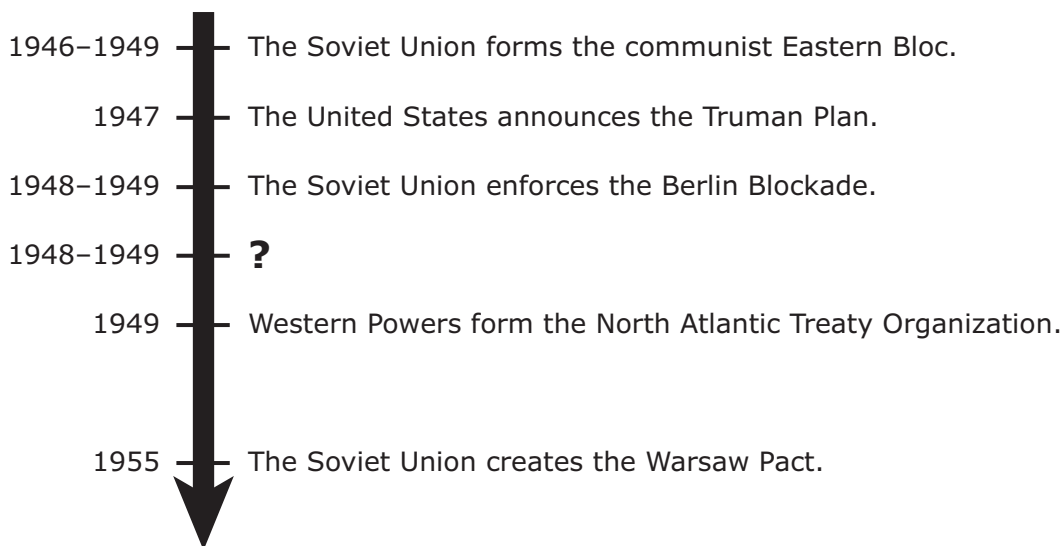
_____ ?

- To present new concepts for established products and ideas
- To introduce new technology that replaces existing products
- To organize and manage an enterprise with some personal risk

Which title best completes this list?

- A** Roles of Entrepreneurs
 - B** Goals of the Federal Reserve
 - C** Objectives of Trade Union Leaders
 - D** Responsibilities of Business Professors
-
- 18** The establishment of speakeasies in the 1920s was an unintended consequence of which federal government action?
- F** The taxation of imported luxury goods
 - G** The deportation of suspected communist sympathizers
 - H** The prohibition of the sale of alcoholic beverages
 - J** The implementation of immigration restrictions

East–West Conflict in Europe During the Cold War



Which statement correctly completes this time line?

- A** The Allied powers divide Germany and Berlin into four sectors.
- B** German citizens vote to reunite East and West Germany.
- C** The United States and Great Britain airlift supplies to West Berlin.
- D** The United Nations sends troops into Eastern Europe.

-
- 20** In response to public concern over issues raised by Upton Sinclair's *The Jungle*, the federal government expanded its role in —
- F** working with labor unions to increase worker salaries
 - G** taking responsibility for the safety of consumers
 - H** setting limits on the growth of private industry
 - J** implementing social welfare programs

21 Which of the following demonstrates the diffusion of American culture?

- A** The establishment of multinational research centers in Antarctica
 - B** The presence of German immigrants in the United States
 - C** The establishment of a Saudi Arabian embassy in the United States
 - D** The rise of baseball as a major sport in Japan
-

22



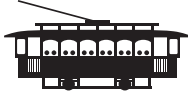

American Indian leaders and activists organize a nonviolent protest to bring attention to issues affecting American Indians. More than 600 people travel in the "Trail of Broken Treaties" in a caravan of buses, cars, trucks, and campers to Saint Paul, Minnesota.

— "1972: Trail of Broken Treaties," *U.S. National Library of Medicine, Native Voices*, www.nlm.nih.gov (accessed April 7, 2014)

Which earlier protest was most similar to the one described above?

- F** The gathering of disillusioned youth at Woodstock
- G** The burning of draft cards by opponents of the Vietnam War
- H** The March on Washington for Jobs and Freedom
- J** The labor demonstrations during the Pullman strike

Urban Mass Transit Vehicles, New York City, 1869–present

| | | | |
|----------------|---|--|--------------|
| Elevated train |  | Train that ran on aboveground tracks | 1869–1973 |
| Cable car |  | Streetcar operated by underground steam-driven cable conduits | 1883–1909 |
| Trolley |  | Streetcar operated by overhead or underground electrical power | 1887–1957 |
| Subway |  | Train that runs on underground tracks | 1904–present |

Courtesy of the New York Transit Museum

How did these developments in transportation most affect the standard of living in U.S. cities?

- A** By increasing the expenses associated with relocation
- B** By giving residents more flexibility in employment
- C** By expanding the options for personal education
- D** By increasing traffic congestion on city streets

As secretary of commerce . . . Herbert Hoover seized on the cooperation between industry and science that had emerged during World War I and boldly extended it further into the realm of commerce. . . . Among Secretary Hoover's most significant initiatives . . . was standardization and simplification of industrial parts and procedures. . . . The formulation of standard weights for loaves of bread, standard sizes for cans, and uniform rating of canned goods for quality, as well as standardization of packaging units . . . greatly facilitated distribution, retailing, and accounting.

—*Herbert Hoover, Economic Mastermind,*
Library of Congress, www.locweb2.loc.gov
(accessed March 18, 2014)

How did the introduction of these new practices most benefit U.S. business?

- F** By increasing production efficiency
- G** By preventing shortages of goods
- H** By increasing protective tariffs
- J** By decreasing exports

25 The Chinese Exclusion Act of 1882 was primarily a response to —

- A** increased U.S. presence in China
- B** competition for jobs on the West Coast
- C** rapid population growth in the Northeast
- D** China's actions during the Boxer Rebellion



© CORBIS

This cartoon comments on tactics used to —

- F** secure the southern border of California
- G** protect shipping lanes in the Great Lakes
- H** create a defensive alliance with France
- J** obtain control of the Panama Canal Zone

All who recall the condition of the country in 1890 will remember that . . . the country was in real danger from another kind of slavery . . . that would result from the aggregations of capital in the hands of a few individuals and [businesses] controlling, for their own profit and advantage exclusively, the entire business of the country, including the production and sale of the necessities of life.

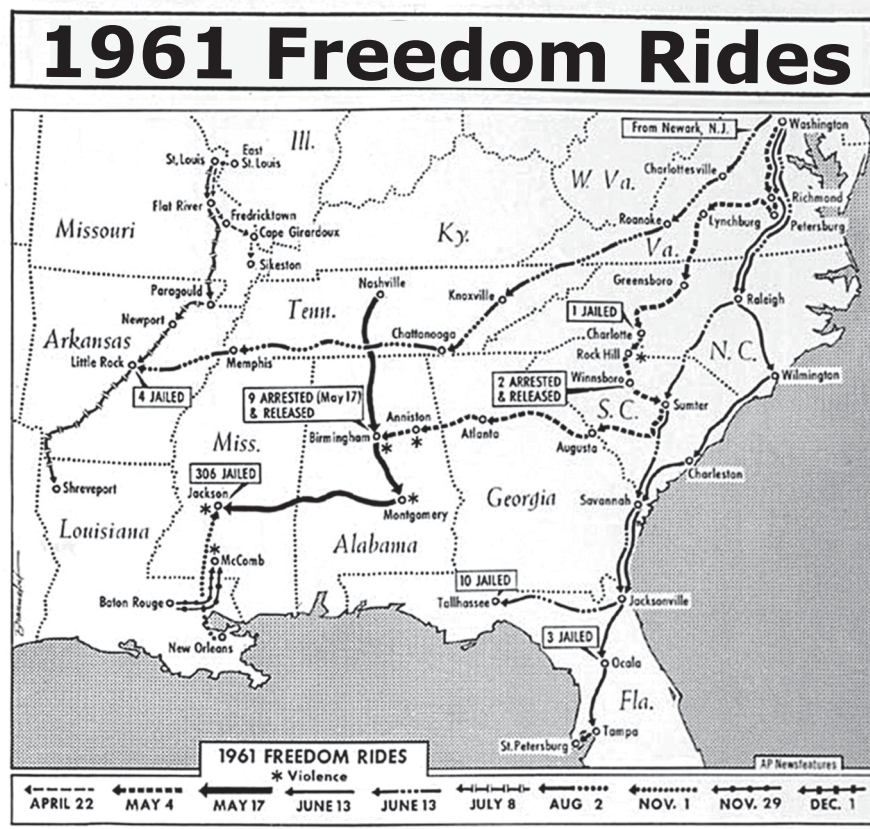
—*Supreme Court Justice John Marshall Harlan, 1911*

In this excerpt, Justice Harlan is warning against —

- A** a civil service based on patronage rather than merit
- B** allowing powerful monopolies to dominate interstate commerce
- C** a lack of federal funding for essential transportation systems
- D** allowing labor unions to interfere with production goals

- 28 As part of the Nixon administration's policy of Vietnamization, the U.S. military —
- F trained South Vietnamese forces to take over combat responsibilities from U.S. troops
 - G shared military technology with North Vietnam
 - H imposed martial law in North Vietnam
 - J installed a puppet government in South Vietnam

29



What was the goal of the protests depicted on this map?

- A To pressure Congress to prohibit discrimination against disabled citizens
- B To demonstrate the economic impact of discriminatory practices on interstate transportation
- C To challenge the federal government to enforce Supreme Court rulings against discrimination in interstate transportation
- D To persuade states to abandon discriminatory voter-registration procedures

In the last half of the nineteenth century, the United States experienced vast industrial growth. A new class of wealthy entrepreneurs and a prosperous middle class emerged. Factory jobs also increased to meet production demands.

Which demographic change in the United States is most associated with this transformation?

- F** Increased property values in rural areas
 - G** Increased life expectancies in urban areas
 - H** Increased birth rates in rural areas
 - J** Increased migration to urban areas
-

Where . . . the investigation is no longer a general inquiry into an unsolved crime but has begun to focus on a particular suspect, the suspect . . . has requested and been denied an opportunity to consult with his lawyer, and the police have not effectively warned him of his absolute constitutional right to remain silent, the accused has been denied “the Assistance of Counsel” in violation of the Sixth Amendment . . .

—Escobedo v. Illinois, 1964

What was one impact of this ruling?

- A** Impeachment procedures were redefined.
- B** Due process guidelines were reexamined.
- C** Full faith and credit was reaffirmed.
- D** State laws were deemed supreme over federal laws.

| U. S. S. RANGER | |
|--|-------------------|
| NAVAL DISPATCH | |
| Heading: NSS NR 977 Z OFB 15 30 OF3 OF4 0 BT | |
| AIR RAID ON PEARL HARBOR X THIS IS NOT DRILL | |
| EXECUTIVE | |
| From: CINGPAC | Date: 7 DEC 41 ED |
| To: CINCLA NT CONAF OPNAV | STAFF CNO |
| Info: | No. 37 |
| <small>Genl. Staff GDD Navy Air Int. Li. Com. Eval Com. Med. Sup. Dist. Chap. Mat. App. AIA. COM EOP. GOD. Oper. VFA YFA VFAI VFAII VFAIII</small> | |
| ACTION | |
| INFO | |

This naval dispatch reads "AIR RAID ON PEARL HARBOR X THIS IS NOT DRILL."

Source: Library of Congress, Manuscript Division

The event reported in this dispatch led directly to —

- F** the implementation of sanctions against Japan
- G** U.S. entry into World War II
- H** the establishment of the Truman Doctrine
- J** U.S. annexation of Hawaii

33 How did the creation of the Federal Deposit Insurance Corporation change the nature of banking in the United States?

- A** The government began to guarantee bank deposits.
 - B** Depositors could transfer investments without penalties.
 - C** Depositors were guaranteed minimum interest rates on savings accounts.
 - D** The government required taxpayers to open savings accounts.
-

34

Selected Features of the War Powers Resolution, 1973

- The president may only make use of armed forces following a declaration of war, authorization by Congress, or an attack on the United States.
- The president must consult with Congress regularly regarding the use of armed forces as long as troops remain in hostile situations.
- Within 60 days the president will end the use of armed forces unless Congress acts to approve continued military action.

How does this resolution demonstrate the principle of checks and balances?

- F** It expands the power of judicial review to military courts.
- G** It allows the executive to determine the length of military conflicts.
- H** It allows Congress to limit the military authority of the executive branch.
- J** It gives Congress oversight of military strategy and operations.

Commerce makes men independent of each another, gives quite another idea of their personal value, persuades them to manage their own affairs, and teaches them to be successful. . . .

No country in the world has a more lively or concerned feeling for property than the United States and nowhere else does the majority display less inclination toward those doctrines which threaten to impair in any way at all the manner in which property is owned.

— *Alexis de Tocqueville, Democracy in America*

Which value important to America's success as a constitutional republic is best illustrated in this excerpt?

- A Social justice
- B Populism
- C Laissez-faire
- D Egalitarianism

- 36** Some of President Franklin D. Roosevelt’s New Deal programs were declared unconstitutional when the Supreme Court held that they —
- F** required U.S. cooperation with foreign nations
 - G** prevented equal access to the judicial system
 - H** granted privileges to religious organizations
 - J** infringed on powers reserved to the states
-

37

Populist Demands in the Late 1800s

- Regulation of railroad shipping charges
- A graduated income tax
- Free and unlimited coinage of silver

These demands most reflected the concerns of —

- A** small farmers in need of affordable credit
- B** robber barons pursuing higher profits
- C** prominent bankers who controlled the money supply
- D** immigrant workers seeking economic justice

Soviet Premier Leonid Brezhnev and
President Richard Nixon, June 19, 1973



Source: NARA

What was the primary goal of discussions between these two leaders?

- F** To recognize the independence of former satellite states
- G** To reach a formal agreement on weapons control
- H** To negotiate the reunification of Germany
- J** To develop a global environmental-protection policy

Whenever normal agencies prove inadequate to the task and it becomes necessary for the Executive Branch of the Federal Government to use its powers and authority . . . the President's responsibility is inescapable. In accordance with that responsibility, I have today issued an Executive Order directing the use of troops under Federal authority to aid . . . at Little Rock, Arkansas.

—President Dwight D. Eisenhower, address from the White House, September 24, 1957

President Eisenhower exercised his federal authority in an effort to —

- A** ensure the safety of protesters at lunch counter sit-ins
- B** end the violence directed against the Freedom Riders
- C** enforce a ruling to desegregate public schools
- D** protect citizens from rioting spurred by Ku Klux Klan rallies

A song for the grand old Temp'rance tree,
That is bearing goodly fruit!
Its blessings ev'ry where we see,
We praise it, branch and root.
We'll plant it wherever rum shops are,
In our native land so far,
Till its noble branches spread afar
On the golden sunny air!

Oh! we'll gather round
The Temp'rance tree,
And sing our songs of joy.
Till the viper that is in the cup,
Shall no more destroy!
Till the viper that is in the cup,
Shall no more destroy!

Source: Library of Congress, Music Division

These lyrics are representative of a movement that culminated in a constitutional amendment during the —

- F** Harlem Renaissance
- G** New Deal
- H** Reconstruction era
- J** Progressive Era



Source: NARA

This cartoon depicts President Woodrow Wilson calling on Congress to —

- A ratify the Treaty of Versailles
- B issue a declaration of war against Germany
- C authorize the use of funds to support Russian revolutionaries
- D enact trade sanctions against Germany

_____ ? _____ was more involved in the minds and hearts and aspirations of people than any other First Lady in history. By the end of her life she was one of the most esteemed women in the world.

During her 12 years in the White House she was sometimes laughed at and sometimes bitterly resented. But during her last years she became the object of almost universal respect. . . .

She was hailed by countless numbers as their personal champion in a world first depression-ridden, then war-torn and finally maladjusted in the postwar years. She was a symbol of the new role women were to play in the world. As a result of her work in the United Nations, particularly in behalf of the little peoples of the world, this esteem soon transcended national barriers to become virtually worldwide. . . .

—New York Times, *November 8, 1962*

Who is described in the obituary above?

- F** Jacqueline Kennedy
- G** Mamie Eisenhower
- H** Eleanor Roosevelt
- J** Claudia "Lady Bird" Johnson

43 Which factor contributed most to the flooding in New Orleans during Hurricane Katrina?

- A** The location of the surrounding barrier islands
- B** The city's low elevation
- C** The presence of offshore oil rigs
- D** The buildup of silt in the Mississippi

Principles of the World Trade Organization

- Grants trading partners “most favored nation” status
- Lowers trade barriers through negotiations
- Discourages unfair trade practices and encourages competition
- Creates trade opportunities for less-developed countries

How have these principles most affected U.S. markets?

- F** By stimulating consumer demand for products
- G** By making business transactions costlier
- H** By causing shortages of essential materials
- J** By discouraging coordination among producers

A homesteader had only to be the head of a household or at least 21 years of age to claim a 160-acre parcel of land. Settlers from all walks of life including newly arrived immigrants, farmers without land of their own from the East, single women and former slaves came to meet the challenge of "proving up" and keeping this "free land." Each homesteader had to live on the land, build a home, make improvements and farm for 5 years before they were eligible to "prove up." A total filing fee of \$18 was the only money required. . . .

—*National Park Service, www.nps.gov*
(accessed November 14, 2013)

The process described above led to —

- A** peaceful resolution of territorial disputes with American Indians
- B** the establishment of agricultural communities on the American frontier
- C** federal regulation of agriculture
- D** a decline in immigration to urban areas

The reason . . . is not because our only powerful potential enemy has sent men to invade our shores . . . but rather because of the traitorous actions of those who have been treated so well by this Nation. . . .

This is glaringly true in the State Department. There the bright young men who are born with silver spoons in their mouths are the ones who have been most traitorous. . . .

—*Joseph McCarthy, speech at Wheeling, West Virginia,
February 9, 1950*

In this excerpt, McCarthy is attempting to incite fear about —

- F** Japanese Americans confined in internment camps
- G** organizers of the Civil Rights movement
- H** accomplices in the Watergate scandal
- J** members of the Communist Party in government positions

47 During the late nineteenth century, many Irish immigrants were discriminated against for being —

- A** opposed to machine politics
- B** loyal to the United Kingdom
- C** conscientious objectors
- D** Roman Catholics

As early as 1925, then-Secretary of Commerce Hoover had warned President Coolidge that stock market speculation was getting out of hand. Yet in his final State of the Union Address, Coolidge saw no reason for alarm. Hoover, however, remained fearful. Even before his inauguration, he urged the Federal Reserve to halt “crazy and dangerous” gambling on Wall Street by increasing the discount rate the Federal Reserve charged banks for speculative loans. He asked magazines and newspapers to run stories warning of the dangers of rampant speculation.

But Presidents in 1929 were not supposed to regulate Wall Street, or even talk about the gyrating market for fear of inadvertently setting off a panic, and Hoover backed off.

—Richard Norton Smith and Timothy Walch,
“The Ordeal of Herbert Hoover,” 2004

The economic conditions described in this excerpt contributed to —

- F** a global economic depression
- G** an increase in foreign investments in the U.S. market
- H** the adoption of the gold standard
- J** an increase in free market activity

49 How did Andrew Carnegie contribute to civic and social life in the United States?

- A** By promoting spiritual and moral values in public schools
- B** By supporting conservative ideals in federal legislation and foreign policy
- C** By establishing philanthropic organizations dedicated to education and the arts
- D** By creating a charitable foundation to end hunger

The fundamental . . . purpose is to conserve the scenery and the natural and historic objects and the wild life therein and to provide for the enjoyment of the same in such manner and by such means as will leave them unimpaired for the enjoyment of future generations.

—*The Organic Act of 1916*

What was the primary result of this legislation?

- F** States instituted their own environmental regulations.
- G** Settlement on lands with fragile ecosystems was prohibited.
- H** Monopolies seized control of natural resources.
- J** National parks were created as a way to manage land resources.

U.S. Soldiers During World War I



Source: Library of Congress, Prints and Photographs Division

This photograph shows a military tactic that —

- A** made troops more vulnerable to long-range missiles, resulting in heavy casualties
- B** required highly skilled soldiers, resulting in lengthy training periods
- C** made frontal assaults difficult, resulting in long periods of stalemate
- D** required the ability to attack quickly, resulting in a reliance on cavalry forces

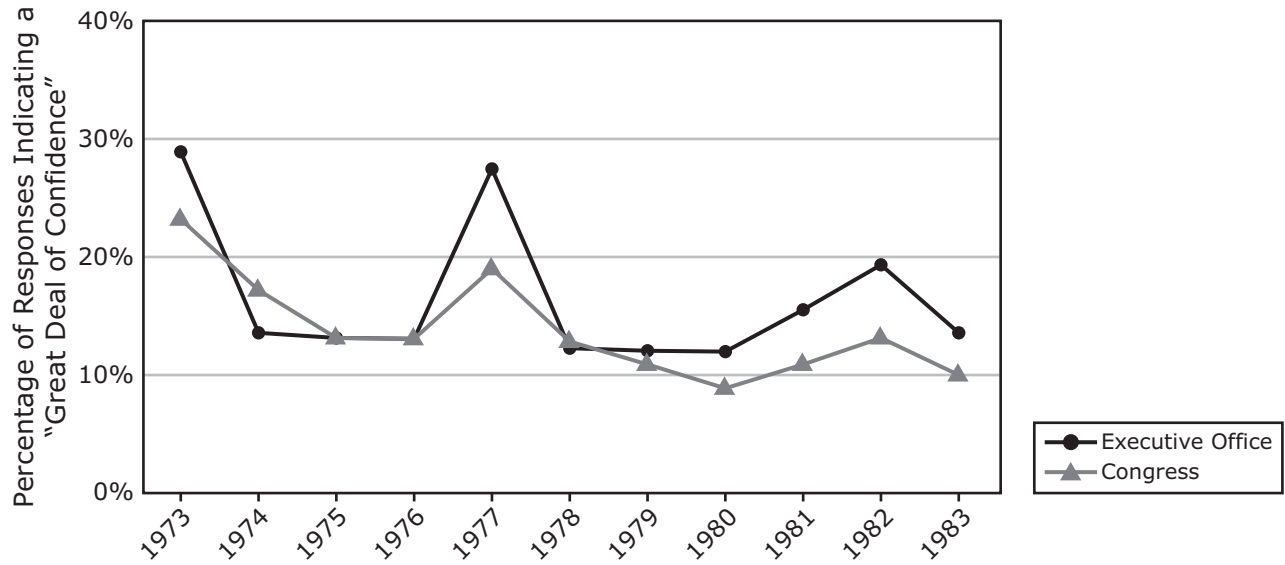
On June 25, 1998, the United States Supreme Court in *Clinton, et al. v. City of New York, et al.* held that the Line Item Veto Act violated the Presentment Clause of the Constitution. The Clause requires that every bill which has passed the House and Senate before becoming law must be presented to the President for approval or veto, but is silent on whether the President may amend or repeal provisions of bills that have passed the House and Senate in identical form. The Court interpreted silence on this issue as equivalent to an express prohibition.

—Thomas J. Nicola, *Congressional Research Service Report for Congress, 1998*

The Supreme Court's actions in agreeing to hear this case illustrate —

- F** key aspects of a democracy based on popular sovereignty
- G** checks and balances between branches of the federal government
- H** legal rulings of a partisan nature as a result of judicial activism
- J** separate roles of state and national governments in a federal system

Trends in Confidence in Government, 1973–1983



Source: National Opinion Research Center at the University of Chicago

Which of the following was the primary reason for the trends in public confidence from 1973 to 1976?

- A The normalization of relations with China
- B The explosion aboard *Apollo 13*
- C The Watergate scandal
- D The nuclear-power accident at Three Mile Island

Agencies Created During the New Deal

- Civilian Conservation Corps
- Works Progress Administration
- Farm Credit Administration
- Home Owners' Loan Corporation

The goals of these New Deal agencies support the conclusion that the New Deal —

- F** gave the federal government a larger role in the day-to-day welfare of its citizens
- G** forced citizens to participate in federal programs
- H** gave preference to state-run agencies over federally run agencies
- J** forced the federal government to adopt isolationist foreign policies

MEMORANDUM

THE WHITE HOUSE
WASHINGTON

October 31, 1979

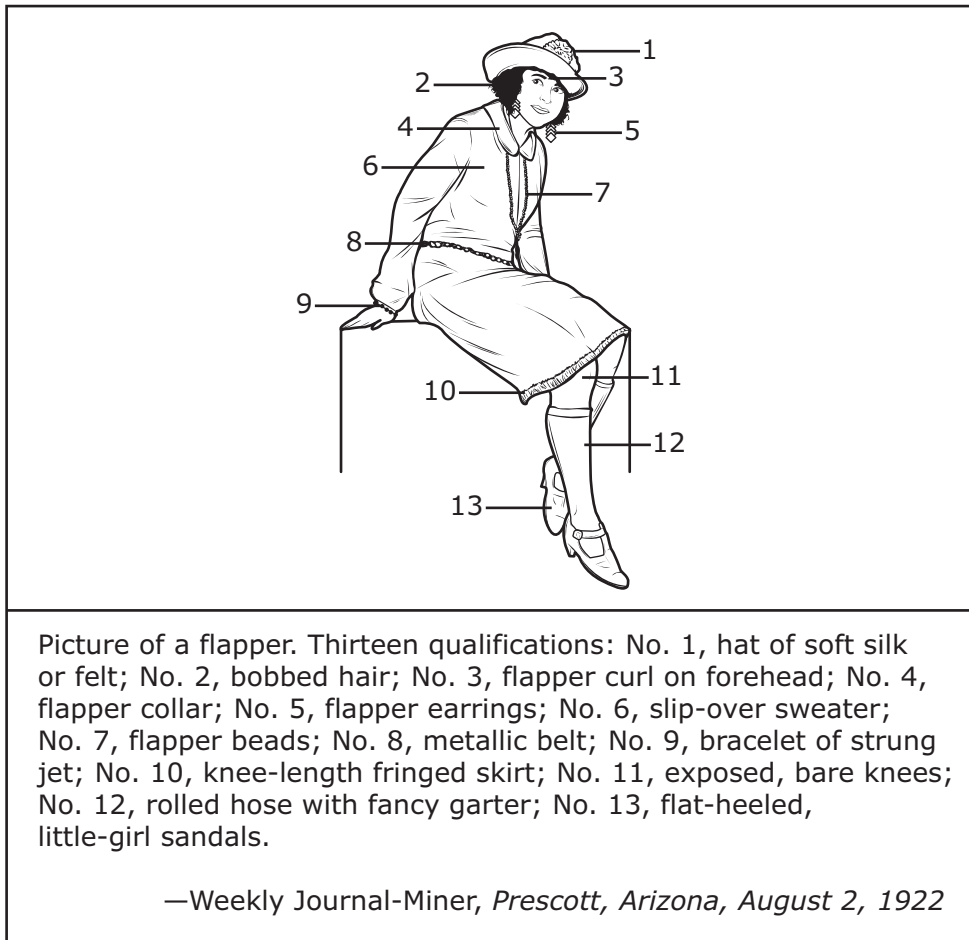
MEMORANDUM FOR: THE PRESIDENT
FROM: DAVID AARON
SUBJECT: Iran Demonstrations

Thursday is a religious holiday in Tehran, and the authorities have called for a massive religious/political demonstration to protest U.S. policy and the presence of the Shah in the United States. Police in Tehran anticipate up to one million demonstrators. The program calls for public prayers and a rally in the working class district in South Tehran, followed by a march into town.

Source: NARA

These demonstrations led to —

- A a global energy crisis brought on by an OPEC oil embargo
- B the bombing of a Marine barracks, followed by retaliatory U.S. air strikes
- C a U.S. boycott of the Olympics in protest of events in Central Asia
- D a hostage crisis that severely damaged confidence in the Carter administration



Which inference about the 1920s is supported by this illustration?

- F** Women confronted discrimination in employment and education.
- G** Women challenged traditional attitudes and social norms.
- H** Reform organizations targeted women's issues.
- J** Mass media reflected trends popular in rural communities.

Today, on behalf of your fellow Americans, I offer a sincere apology to you for the actions that unfairly denied . . . families fundamental liberties during World War II.

In passing the Civil Liberties Act of 1988, we acknowledged the wrongs of the past and offered redress to those who endured such grave injustice. In retrospect, we understand that the nation's actions were rooted deeply in racial prejudice, wartime hysteria, and a lack of political leadership.

—President Bill Clinton, letter of apology, October 1, 1993

In this excerpt, President Clinton is apologizing for —

- A** the passage of the Chinese Exclusion Act
- B** the verdict of the Sacco and Vanzetti trial
- C** the hearings of the House Un-American Activities Committee
- D** the internment of Japanese Americans

- 58** These photographs are of the same student at Carlisle Indian School during the late nineteenth century.



Tom Torlino, Navajo
As He Entered the School in 1882 As He Appeared Three Years Later

Source: Archives and Special Collections, Dickinson College, Carlisle, PA

Which word best explains the changes shown in these photographs?

- F** Immigration
- G** Assimilation
- H** Nullification
- J** Nativism

59 Which of the following identifies two effects of the Harlem Renaissance?

A

- Increased geographic concentration of African Americans
- Increased popularity of venues featuring African American artists

B

- Founding of colleges for African Americans
- Founding of the Socialist Party

C

- Founding of Tuskegee University
- Migration of African Americans to western states

D

- Ratification of constitutional amendments ensuring rights for African Americans
- Increased support for the prohibition of alcoholic beverages

On January 22, 1964, the Joint Chiefs of Staff sent Secretary of Defense McNamara a memorandum that included the following recommendations:

- Assign responsibilities for the total U.S. program in Vietnam to the U.S. military commander
- Commit additional U.S. forces, as necessary, in support of the combat action within South Vietnam
- Commit U.S. forces, as necessary, in direct actions against North Vietnam

What happened as a direct result of these recommendations?

- F** North Vietnamese leaders appealed for a ceasefire.
- G** U.S military involvement in Vietnam escalated.
- H** South Vietnamese leaders rejected military assistance.
- J** Soviet ground troops were deployed to Vietnam.

Selected Aspects of the U.S. Economy, 1950–1960

- Civilian employment grew from 59.7 million to 66.4 million.
- The gross domestic product (GDP) increased 39 percent.
- The average family income increased 57.9 percent.

The changes described in this list contributed most directly to —

- A** a decline in home ownership rates
- B** a rise in the number of business failures
- C** a decrease in federal employment opportunities
- D** an increase in consumer spending

62 Which of these is the best definition of an era?

- F A period of time identified by political, economic, or social trends
- G A series of various changes over many years
- H A series of events unified by individual or organized protests
- J A period of time lasting between 10 and 15 years

63



Which numbered territory did the United States gain by winning the Spanish-American War?

- A 1
- B 2
- C 3
- D 4

64

| 1980s | 2010s |
|---------------------------------------|--|
| Work in an office | Work from home |
| In-house customer-service departments | Outsourcing of customer service |
| Handmade items sold at local fairs | Handmade items sold to people all over the world |
| Research conducted at libraries | Research conducted remotely |

Which of the following is most responsible for the differences shown on the table?

- F Robert L. Johnson's creation of a major television network
- G Tim Berners-Lee's invention of the World Wide Web
- H Jeff Bezos' founding of Amazon.com
- J Michael Dell's use of just-in-time manufacturing

65 Which of the following is an example of using a renewable resource to generate electricity?

- A Building pipelines to maximize the efficiency of transporting oil and gas
- B Placing large wind turbines in areas with strong, steady winds
- C Using hydraulic fracturing with water and sand to release oil and gas
- D Conducting open-pit mining in areas where coal is found near the surface

66 These murals were painted during the 1970s in California.



© Joseph s giacalone/Alamy



© Citizen of the Planet/Alamy



© Joseph s giacalone/Alamy

This artistic movement demonstrates the contributions of which culture to U.S. art?

- F Hispanic American
- G Chinese American
- H Irish American
- J African American

67 What is one major reason various industries have adopted the use of automated robotic assembly?

- A** To increase employee work hours
- B** To increase monetary investment
- C** To decrease safety requirements
- D** To increase manufacturing productivity

U.S. Army Poster, 1942



Source: Illinois Digital Archives, World War II
Poster Collection

The U.S. Army distributed posters like this one with the goal of encouraging —

- F** the sale of war bonds
- G** young men to voluntarily enlist
- H** the creation of a selective service
- J** young men to return to school

STAAR
U.S. History
May 2017



801247